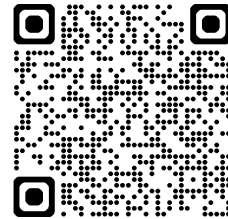
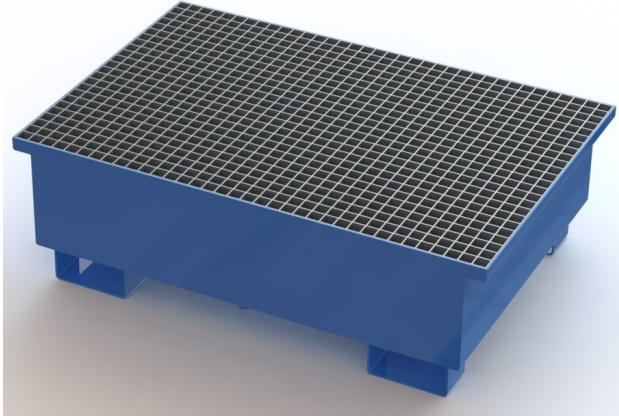




## Technical sheet



### Steel sump tray for 2 drums with drain screw – ZVO 128

**PROPERTIES:**

**Material:** steel

**Colour:** RAL 5010 gentian blue

**Dimensions:** 1210 x 810 x 380 mm (L x W x H)

**Wall thickness:** 3 mm

**Weight:** 72 kg

**Collection volume:** 220 l

**Load capacity:**

**sump tray:** 600 kg

**grid:** 1 150 kg/m<sup>2</sup>

**Capacity:** 2 x 200 l drums

**Surface treatment:**

**sump tray:** powder paint

**grid:** hot-dip galvanizing

**Suitable use:** indoor and outdoor areas